

1926

## 1926. V64.02. August Bulletin.

Hope College

Follow this and additional works at: <http://digitalcommons.hope.edu/catalogs>

 Part of the [Archival Science Commons](#)

---

### Recommended Citation

Hope College, "1926. V64.02. August Bulletin." (1926). *Hope College Catalogs*. Book 89.  
<http://digitalcommons.hope.edu/catalogs/89>

This Book is brought to you for free and open access by the College Publications at Digital Commons @ Hope College. It has been accepted for inclusion in Hope College Catalogs by an authorized administrator of Digital Commons @ Hope College. For more information, please contact [digitalcommons@hope.edu](mailto:digitalcommons@hope.edu).

# Hope College Bulletin

Vol. 64

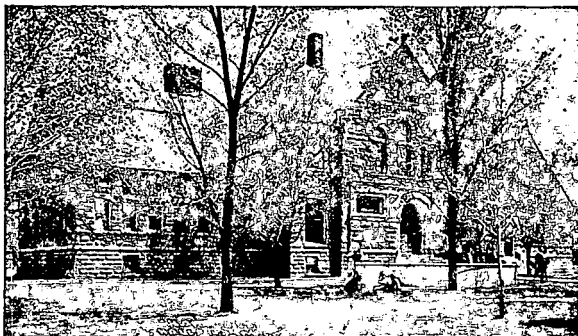
August, 1926

Number 2

---

---

## ANNOUNCING THE GROUPS OF STUDY FOR THE SCHOOL YEAR 1926 - 1927



---

---

Entered as second-class mail matter May 19, 1915, at the post office at  
Holland, Michigan, under the Act of August 24, 1912.

## FORWARD

Every High School graduate who expects to continue his education will give careful consideration to the college he chooses to attend. Since the type of school attended will prove a strong factor in future development, no question is of greater importance than, "What School in September?" Have you studied carefully the opportunities Hope College offers? As one of the strongest of the smaller Christian Colleges, Hope College offers the best of courses under competent instructors in History, Classical and Modern Languages, Literature, Sciences, Ethics, Religion, and Music. Hope College stands for purposeful Christianity, a strong loyal Americanism, and a vigorous personality. Hope College has trained and is now training world workers as ministers, teachers, physicians, lawyers, and business men. Hope College is accredited by "The Association of American Colleges and Universities," "The North Central Association of Colleges and Secondary Schools," and also, the State and Private Universities of the Middle Western States. Tuition is sixty dollars a year. Board and room can be secured at reasonable rates, and the cultural atmosphere of the city is most wholesome.

Your correspondence is invited.

Address all communications to

HOPE COLLEGE,  
Office of the President,  
Holland, Michigan.

## CALENDAR

### FOR THE FIRST SEMESTER, 1926-1927.

- 1926 September 1 to 15, Registration, Graves Hall, 9:00 a. m. to 12:00 m.  
September 15, Formal Opening, Winants Chapel, 9:00 a. m.  
November 25, Thanksgiving Recess.  
December 22, 12:00 noon, Christmas Recess until
- 1927 January 5, 8:00 a. m.  
January 27-28, Semester Examinations.  
January 28, First Semester ends.

---

---

### REQUIREMENTS FOR ADMISSION

Graduates from any High School accredited by the University of Michigan or one of the standard accrediting Associations of America, will be admitted on presentation of a certificate of graduation from High School together with a transcript of their record and statement of good moral character. All other applicants will be examined upon the subjects prerequisite to the Group (see below) which they wish to enter. No student will be admitted to Freshman rank who offers less than 15 units and all such must complete 16 units of work before they will be granted full collegiate rank. These conditions must be removed before the beginning of the second semester. (A unit is interpreted as one hour per week throughout the year.)

---

---

### COURSES OFFERED, 1926-1927

The required subjects for the Freshman and Sophomore years are grouped below. Required subjects for the Junior and Senior years may be determined by reference to the course groups. The choice of electives depends upon the group selected, subject to the approval of the committee on Courses of Study. A total of 130 semester hours are required for graduation. A semester hour is one recitation of 50 minutes per week for one semester. The figures in the groups refer to semester hours.

The student must select and complete one of the following groups. (The figures refer to semester hours):

Classical		Science	
Greek .....	20	Chemistry or Biology .....	20
Latin .....	20	Biology or Chemistry .....	10
English .....	15	French or German .....	20
Mathematics .....	9	Physics .....	10
History .....	8	Mathematics .....	9
Biblical Literature .....	6	Biblical Literature .....	6
Public Speaking .....	4	English .....	6
Political Science .....	4	History .....	4
Psychology .....	4	Public Speaking .....	2
Ethics .....	4	Psychology .....	4
Evidences .....	4	Evidences .....	4
Electives .....	32	Electives .....	35
	130		130
Latin		History	
Latin .....	20	History .....	24
A Modern Language .....	20	A Modern Language .....	20
English .....	15	English .....	15
Mathematics .....	9	Political Science .....	8
History .....	8	Philosophy .....	8
Biblical Literature .....	6	Biblical Literature .....	6
Public Speaking .....	4	History of Education .....	6
Political Science .....	4	Psychology .....	4
Psychology .....	4	Evidences .....	4
Ethics .....	4	Public Speaking .....	2
Evidences .....	4	Electives .....	33
Electives .....	32		130
	130		
English Modern Language		Mathematics	
English .....	30	Mathematics .....	22
French .....	20	Physics .....	10
German .....	20	English .....	15
History .....	8	French or German .....	20
Biblical Literature .....	6	Chemistry or Biology .....	10
Public Speaking .....	2	Biblical Literature .....	6
Political Science .....	4	History .....	4
Psychology .....	4	Public Speaking .....	2
Ethics .....	4	Psychology .....	4
Evidences .....	4	Evidences .....	4
Electives .....	32	Philosophy .....	4
	130	Electives .....	29
			130

### Required Subjects for the Freshman Class in Each Group

Classical		Classical	
First Semester		Second Semester	
Latin .....	5 hours	Latin .....	5 hours
Greek .....	5 hours	Greek .....	5 hours
Mathematics .....	4 hours	Mathematics .....	5 hours
Bible .....	2 hours	Public Speaking .....	1 hour
History			
History .....	4 hours	History .....	4 hours
English .....	5 hours	English .....	5 hours
A Modern Language .....	5 hours	A Modern Language .....	5 hours
Bible .....	2 hours	Public Speaking .....	1 hour

## Latin

Latin .....	5 hours	Latin .....	5 hours
A Modern Language.....	5 hours	A Modern Language.....	5 hours
Mathematics .....	4 hours	Public Speaking .....	1 hour
Bible .....	2 hours	Mathematics .....	5 hours

## Mathematics

Mathematics .....	4 hours	Mathematics .....	5 hours
A Modern Language.....	5 hours	A Modern Language.....	5 hours
English .....	5 hours	English .....	5 hours
Bible .....	2 hours	Public Speaking.....	1 hour

## Modern Language—English

English .....	5 hours	English .....	5 hours
History .....	4 hours	History .....	4 hours
French .....	5 hours	French .....	5 hours
Bible .....	2 hours	Public Speaking .....	1 hour

## Science

Mathematics .....	4 hours	Mathematics .....	5 hours
Chemistry .....	5 hours	Chemistry .....	5 hours
English .....	3 hours	English .....	3 hours
A Modern Language.....	5 hours	A Modern Language.....	5 hours
Bible .....	2 hours	Public Speaking .....	1 hour

## Sophomore Requirements in each Group

## Classical

First Semester		Second Semester	
Latin .....	5 hours	Latin .....	5 hours
Greek .....	5 hours	Greek .....	5 hours
English .....	5 hours	English .....	5 hours
Public Speaking .....	1 hour	Biblical Lit. ....	2 hours

## Latin

Latin .....	5 hours	Latin .....	5 hours
A Modern Language.....	5 hours	A Modern Language.....	5 hours
English .....	5 hours	English .....	5 hours
Public Speaking .....	1 hour	Biblical Lit. ....	2 hours

## History

History .....	4 hours	History .....	4 hours
A Modern Language.....	5 hours	A Modern Language.....	5 hours
English .....	5 hours	Biblical Lit. ....	2 hours
		English .....	5 hours

## Mathematics

Mathematics .....	5 hours	Mathematics .....	5 hours
French or German.....	5 hours	French or German.....	5 hours
Chemistry or Biology.....	5 hours	Chemistry or Biology.....	5 hours
		Bible .....	2 hours

## Modern Language—English

English .....	5 hours	English .....	5 hours
French .....	5 hours	French .....	5 hours
German or Spanish.....	5 hours	German or Spanish.....	5 hours
		Biblical Lit. ....	2 hours

## Science

Chemistry .....	4 hours	Chemistry .....	4 hours
Biology .....	5 hours	Biology .....	5 hours
French or German.....	5 hours	French or German.....	5 hours
		Biblical Lit. ....	2 hours

## The Preparatory School

### Requirements for Admission

Applicants will be received without examination on presentation of a diploma of graduation from a standard Eighth Grade School or upon examination in the following subjects: English, History and Civics, Arithmetic and Physical and Descriptive Geography. A grade will be given upon the efficiency in penmanship and spelling shown in the examination papers submitted. Students will be admitted to Special Groups under the direction of the Principal, Prof. A. H. Timmer.

Three Groups are offered: CLASSICAL, LATIN and ENGLISH. For details consult the general catalog.

Sixteen units of academic work are required for graduation from the Preparatory School. A unit is one recitation a day during the school year. The following are the required subjects for the four years in the three groups offered:

#### D CLASS

<b>Classical</b>	<b>Latin</b>	<b>English</b>
Latin	Latin	English
English	English	English
Algebra	Algebra	Algebra
History	History	History

#### C CLASS

Latin	Latin	Science
Algebra	Algebra	Algebra
English	English	English
History	History	History

#### B CLASS

Greek	French	French
History	History	History
Latin	Latin	English
Mathematics	Mathematics	Mathematics

#### A CLASS

Greek	Latin	French
History	History	English
Mathematics	Mathematics	Mathematics
Science	Science	English or
English	English	Science

Religious Education is required in all Classes and Groups during the entire course one hour a week.

Change from one group to another may be made at the end of a year only except in the case of "D" or first year students who may be allowed to change at any time within the first semester provided all work of the newly chosen group is made up before the end of the year.

## School of Music

### ADMISSION AND DEGREES

The Degree of Bachelor of Music will be granted on the following conditions:

#### Entrance Requirements—

Fifteen Units of Secondary work in literary groups of which not more than two units may be in Music and Drawing. Other vocational units will not be accepted. At least four units must be offered in English and two units in a foreign language; preference will be given to applicants who have done private work in some branch of music under an instructor whose work can be approved by the Faculty of the School of Music.

**A Combined Course** leading to the Degree of Bachelor of Arts and of Bachelor of Music will be granted to students who complete six years of residence work with a minimum total of 90 hours of literary work, of which at least ten shall be in Physical Science.

**All students** who are candidates for the Degree in Music shall take Piano for not less than one year.

**A Maximum Credit** of two (2) semester hours a year will be allowed for work as members in the various musical organizations recognized by the School of Music in conjunction with the Liberal Arts Faculty. In no case will a student be allowed degree credit for membership in more than one organization in any one year, and all credit must be for current membership only—i. e., a student who is a member of two organizations in one year will not be allowed to take credit for one membership during one year and for the other membership during the next or succeeding years. Professional Service (Paid Service under Contract) will not be allowed to any student during term time except under scholarship grants or in cases of unusual proficiency in the major subject.



